

# **BRENT PURE ENERGY:** **BRINGING COMMUNITY SOLAR ENERGY** **TO BRENT**

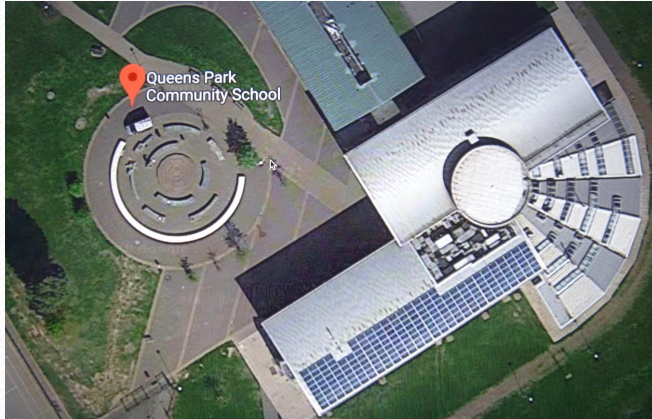


# WHO ARE WE?

- ❖ We are a Community Benefit Society registered with the Financial Conduct Authority (no. 7198)
- ❖ We exist for community benefit, not for profit
- ❖ Our Cooperative model rules are democratic and community driven:
  - All investors become members, one member one vote
  - We have 80 members currently
  - We have Solar panels on Queens Park Community School, Malorees Infant and Junior Schools and Capital City Academy
  - Capital was raised by Community Share Offer
- ❖ We are mentored by Brighton Energy Coop.
- ❖ Grants were received from UCEF, Coops UK and LCEF



*Examples of buildings with solar panels:*



**QUEENS PARK COMMUNITY SCHOOL  
- Science Block P**



*Installation by Brent Pure Energy, August 2016*

49.5 kWp, 198 panels occupies ~ 500 sq m

Output: ~ 47,500 kWh p.a.

Saving to school ~ £2500 p.a

CO<sub>2</sub> saving 25 Tonnes p.a.





## Malorees Schools, NW6 7PB



Installations by Brent Pure Energy, March 2020

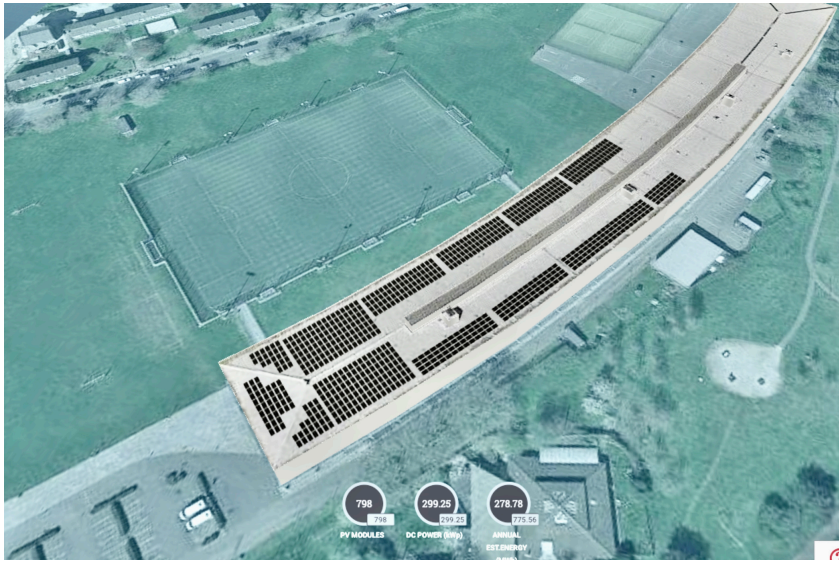
Malorees Infant School  
27.3 kWp, 103 panels  
Output: ~ 25,400 kWh p.a.  
CO<sub>2</sub> saving 13.5 Tonnes p.a.

Malorees Junior School (seen top left)  
25.4kWp, 91 panels  
Output: ~ 23,250 kWh p.a.  
CO<sub>2</sub> saving 12.3 Tonnes p.a.



# Capital City Academy NW10 3ST

## June 2022



300 kWp 659 panels 263 MWh p.a.

CCA pays 8p/kWh

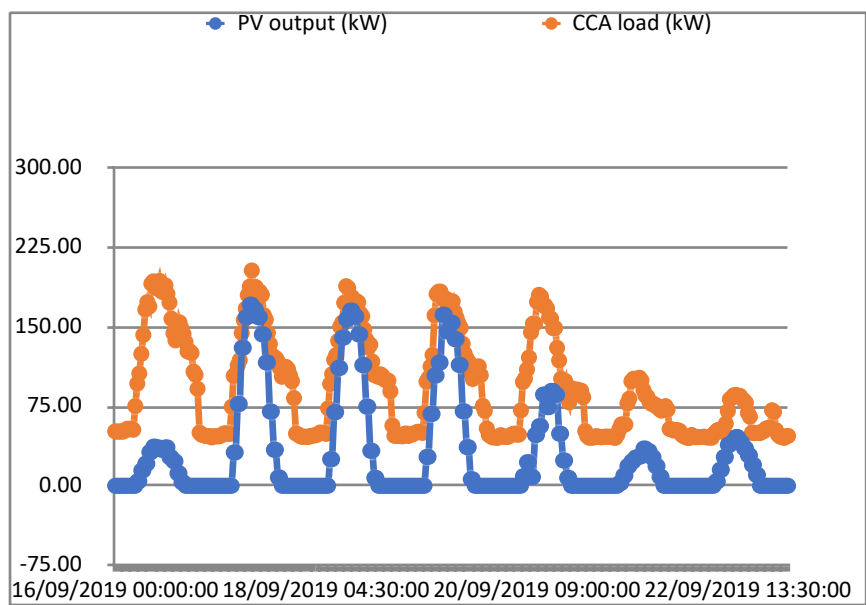
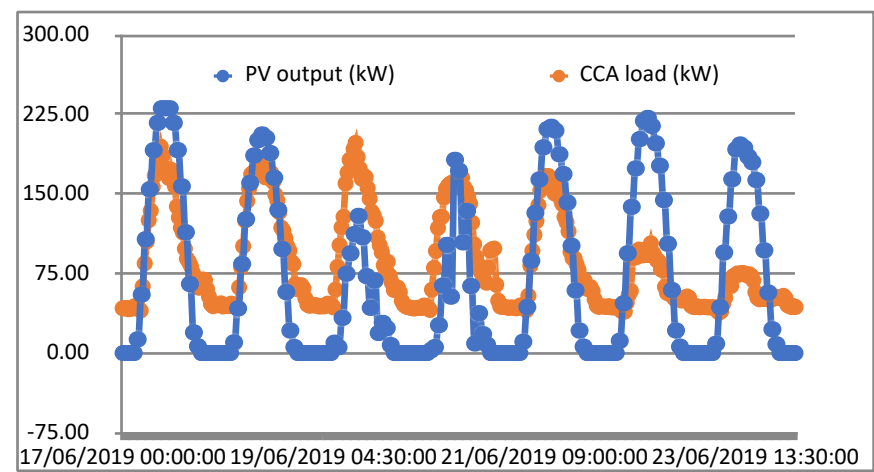
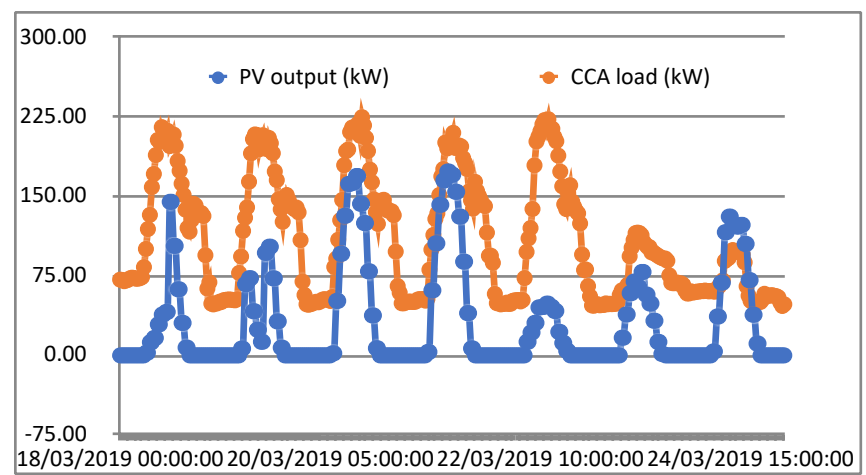
Export PPA 20 p/kWh

£195k investment, 4% interest + 5% capital return p.a.

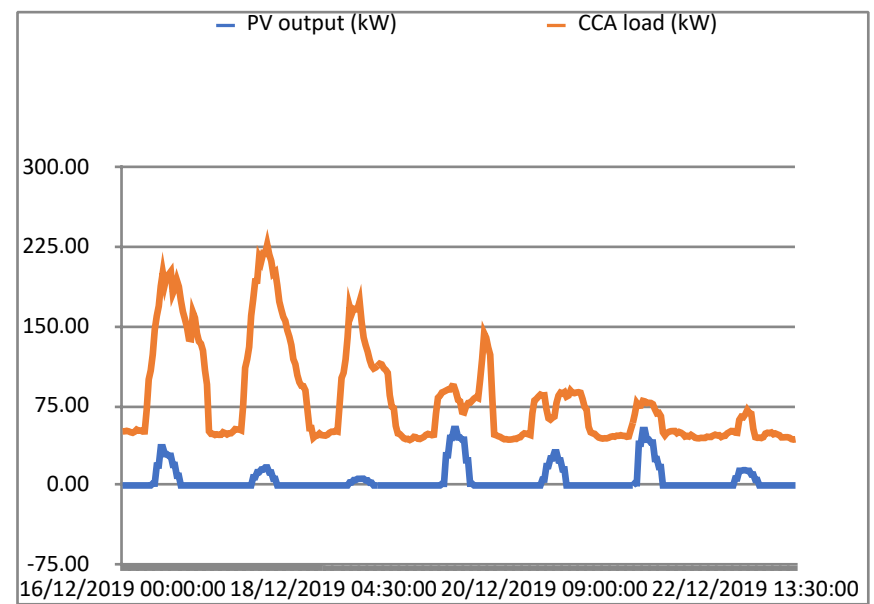
Self-consumption to date: 97.5 %

Installer: GenFit

# Example of a week's solar generation vs CCA demand for March, June, September, December



September 16 -  
22



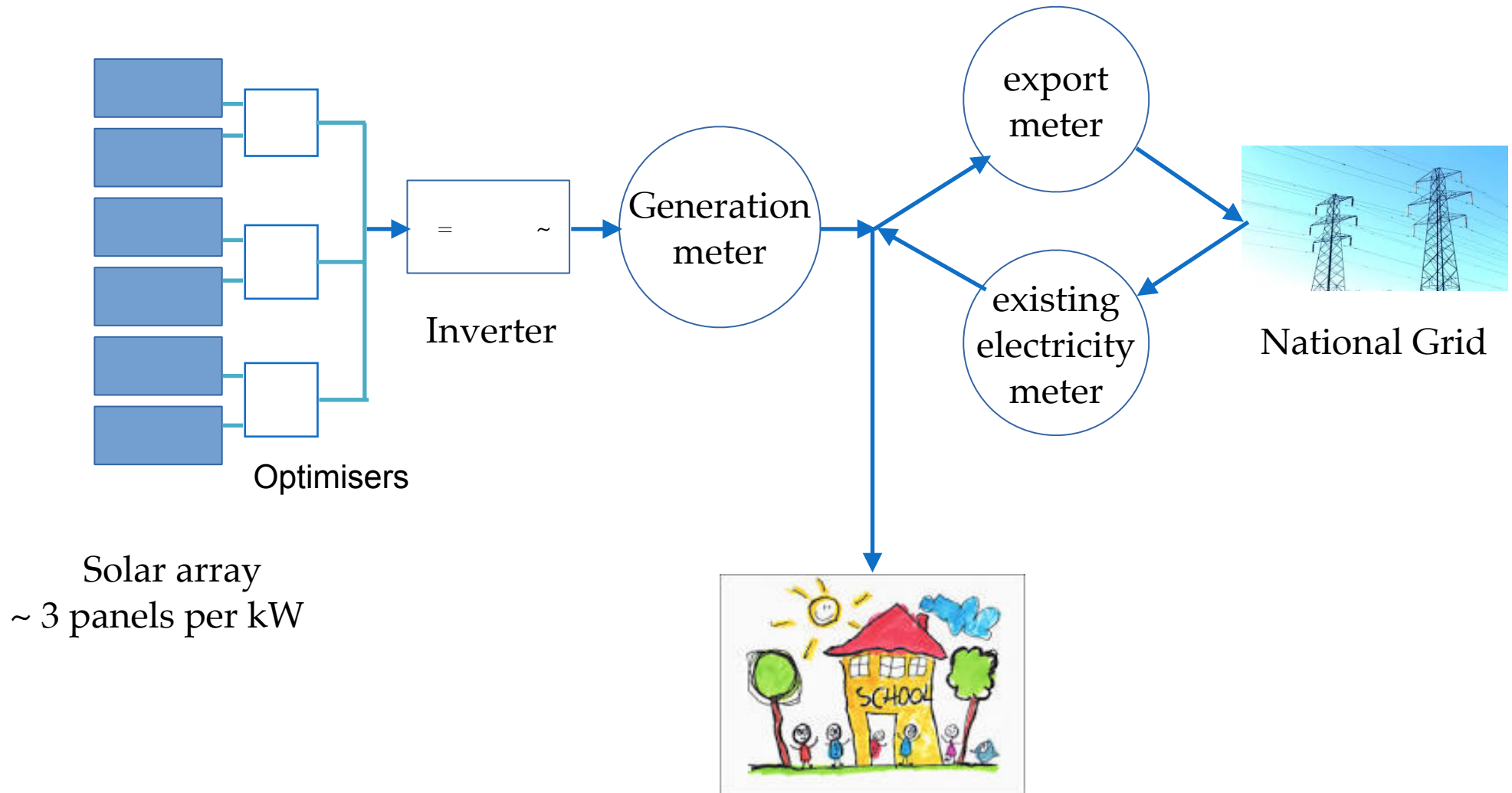
December 16 - 22



## **OUR MODEL:**

- ❖ Capital is raised by Community Share Offer
- ❖ A roof space lease is negotiated with you for the solar panels
- ❖ The installer carries out a structural survey to ensure roof suitability
- ❖ We operate, maintain and insure the installation over 20 years
- ❖ Our insurance covers any damage to your roof
- ❖ We sell the generated electricity to you at reduced rate
- ❖ Exported electricity may be sold through an existing utility
- ❖ Panel income pays running costs, investor interest and capital back over 20 years
- ❖ After this ownership of the panels passes to you.

# SOLAR PV CONNECTION





# HOW THE HOST BENEFITS

## ❖ Cheaper electricity

- In London solar PV systems produce approx. 900 kWh p.a. per installed kW at reduced cost and at low inflation
- Provided for 20 years.....then panels are given to the host

## ❖ Reduces carbon emissions

## ❖ Reduces air pollution

## ❖ Educational Resource

## ❖ Renewable energy in action

## BRENT PURE ENERGY

We are responding to the challenge climate change presents: the need to reach net zero CO<sub>2</sub> emissions by 2050. Solar energy is the most appropriate form of renewable energy in urban environments. It also helps reduce air pollution.

Other projects which reduce energy consumption and hence carbon dioxide emissions are:

Insulation, insulation, insulation!

Heat Pumps, LED lighting, Low energy appliances

Smart metering and controls



# WHAT WE NEED FROM YOU:

- ❖ Memorandum of Understanding agreeing to project going ahead
- ❖ Signed Roof Lease Agreement
- ❖ Meter details
- ❖ Letter of Authority to apply for grid connection
- ❖ Access to roof for installation (approx. 3 days) and a day a year for cleaning the solar panels
- ❖ Access to take quarterly meter readings

We have templates for all these documents. The Lease can be tailored to suit your requirements, to be agreed by your governing body / building owner.

# The Team and Contact Details

- ❖ Ian Saville – Chair
- ❖ Nick Hartley - Secretary 020 8969 9030
- ❖ Tom Wright - Director 07786 578624
- ❖ Glenis Scadding – Director
- ❖ Steven Shaw - Director

All can be contacted via the website, also further details including Share Offer, application form, financial information, etc:

[www.brentpureenergy.org.uk](http://www.brentpureenergy.org.uk)